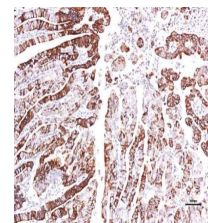


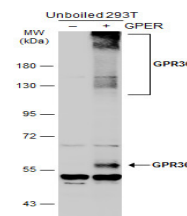
Product Datasheet

GPR30 antibody [C2C3], C-term GRP41

Description	This gene is a member of the G-protein coupled receptor 1 family and encodes a multi-pass membrane protein that localizes to the endoplasmic reticulum. The protein binds estrogen, resulting in intracellular calcium mobilization and synthesis of phosphatidylinositol 3,4,5-trisphosphate in the nucleus. This protein therefore plays a role in the rapid nongenomic signaling events widely observed following stimulation of cells and tissues with estrogen. Alternate transcriptional splice variants which encode the same protein have been characterized. [provided by RefSeq]
Species/Host	Rabbit
Reactivity	Human, Mouse, Rat
Conjugation	Unconjugated
Tested Applications	ICC, IF, IHC-P, WB
Immunogen	Carrier-protein conjugated synthetic peptide encompassing a sequence within the C-terminus region of human GPR30. The exact sequence is proprietary.
Form/Appearance	Liquid: 1XPBS, 20% Glycerol (pH7). 0.025% ProClin 300 was added as a preservative.
Concentration	1.12 mg/ml
Storage	Store as concentrated solution. Centrifuge briefly prior to opening. For short-term storage (1-2 weeks), store at 4°C. For long-term storage, aliquot and store at -20°C or below. Avoid multiple freeze-thaw cycles.
Note	For research use only.
Isotype	IgG
Clonality	Polyclonal
Purity	Purified by antigen-affinity chromatography.
Uniprot ID	Q99527
Entrez	2852
Dilution Range	WB: 1:500-1:3000, ICC: 1:100-1:1000, IHC-P: 1:100-1:1000



Immunohistochemical analysis of paraffin-embedded human endometrial, using GPR30 (GRP493) antibody at 1:150 dilution.



Non-transfected (â€“) and transfected (+) unboiled 293T whole cell extracts (30 ?g) were separated by 7.5% SDS-PAGE, and the membrane was blotted with GPR30 antibody [C2C3], C-term (GRP493) diluted at 1:1000. The HRP-conjugated anti-rabbit IgG antibody