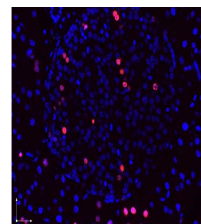


## Product Datasheet

### BrdU (RABBIT) Antibody GRP3682

<b>Description</b>	Anti-BrdU (RABBIT) Antibody
<b>Species/Host</b>	Rabbit
<b>Reactivity</b>	Other
<b>Conjugation</b>	Unconjugated
<b>Tested Applications</b>	ELISA, FC, IF, IHC-P, IP, WB
<b>Form/Appearance</b>	0.02 M Potassium Phosphate, 0.15 M Sodium Chloride, pH 7.2
<b>Concentration</b>	1.1 mg/mL
<b>Storage</b>	Store BrdU Antibody at -20° C or below prior to opening. This vial contains a relatively low volume of reagent (25 µL). To minimize loss of volume dilute 1:10 by adding 225 µL of the buffer stated above directly to the vial. Recap, mix thoroughly and briefly centrifuge to collect the volume at the bottom of the vial. Use this intermediate dilution when calculating final dilutions as recommended below. Store the vial at -20°C or below after dilution. Avoid cycles of freezing and thawing.
<b>Note</b>	For research use only.
<b>Isotype</b>	IgG
<b>Clonality</b>	Polyclonal
<b>Purity</b>	BrdU Antibody was affinity purified from monospecific antiserum by immunoaffinity chromatography.
<b>Source</b>	Anti-BrdU affinity purified antibody was purified from monospecific rabbit antiserum prepared via repeated immunizations with BromodeoxyUridine-KLH.
<b>Entrez</b>	<b>905</b>
<b>Dilution Range</b>	ELISA: 1:2000-1:10,000, Flow Cytometry: 1:50-1:100, Immunochemistry: 1:100-1:500, IF Microscopy: 1:500, Immunoprecipitation: User Optimized, Western Blot: User Optimized



Immunofluorescence  
Microscopy