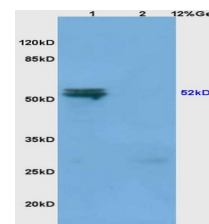


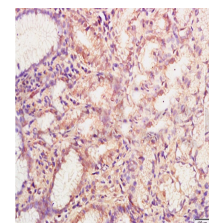
Product Datasheet

GLP-1R Polyclonal Antibody GRP414

Description	This is a receptor for glucagon-like peptide 1. The activity of this receptor is mediated by G proteins which activate adenylyl cyclase.
Species/Host	Rabbit
Reactivity	Human, Mouse, Rat
Conjugation	Unconjugated
Tested Applications	IHC-P, WB
Immunogen	KLH conjugated synthetic peptide derived from rat GLP-1R (public_immunogen_range: 115-145/463)
Form/Appearance	Aqueous buffered solution containing 1% BSA, 50% glycerol and 0.09% sodium azide.
Concentration	1ug/ul
Storage	Store at -20°C for 12 months.
Note	For research use only.
Isotype	IgG
Clonality	Polyclonal
Purity	Purified by Protein A.
Uniprot ID	P32301
Entrez	25051
Dilution Range	WB: 1:300-1000, IHC-P: 1:200-400



WB of GRP414



IHC-P of GRP414