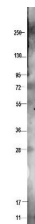


Product Datasheet

Bovine CXCL10 (Rabbit) Antibody GRP2793

Description	Anti-Bovine CXCL10 (Rabbit) Antibody
Species/Host	Rabbit
Reactivity	Bovine, Sheep, Goat
Conjugation	Unconjugated
Tested Applications	ELISA, WB
Form/Appearance	0.02 M Potassium Phosphate, 0.15 M Sodium Chloride, pH 7.2
Concentration	1.17 mg/mL
Note	For research use only.
Isotype	IgG
Clonality	Polyclonal
Source	This protein-A purified antibody was prepared from whole rabbit serum produced by repeated immunizations with a recombinant protein raised in yeast, corresponding to the 83 amino acids of the mature bovine CXCL10 protein.
Uniprot ID	Q2KIQ8
Entrez	22724
Dilution Range	ELISA: 1:10,000, Western Blot: 1 µg /mL



Anti-Bovine CXCL10
Antibody -
Western Blot