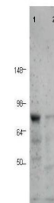


Product Datasheet

BORIS (RABBIT) Antibody GRP3523

Description	Anti-BORIS (RABBIT) Antibody
Species/Host	Rabbit
Reactivity	Human
Conjugation	Unconjugated
Tested Applications	ELISA, WB
Form/Appearance	0.02 M Potassium Phosphate, 0.15 M Sodium Chloride, pH 7.2
Concentration	1.28 mg/mL
Note	For research use only.
Isotype	IgG
Clonality	Polyclonal
Source	This affinity purified antibody was prepared from whole rabbit serum produced by repeated immunizations with a synthetic peptide corresponding to N-Terminal region near aa 1-30 of human BORIS protein.
Uniprot ID	Q8NI51
Entrez	1215660
Dilution Range	ELISA: 1:2,000 - 1:10,000, Western Blot: 1:200 - 1:2,000



Anti-BORIS Antibody -
Western
Blot