

Product Datasheet

BIOTIN Ligase EPITOPE TAG (RABBIT) Antibody GRP1577

Description The peptide is also called the biotin acceptor peptide (BAP) of the biotin carboxyl carrier protein (BCCP) subunit of acetyl CoA carboxylase of E. coli.

Species/Host Rabbit

Conjugation Unconjugated

Tested Applications ELISA, WB

Form/Appearance 0.02 M Potassium Phosphate, 0.15 M Sodium Chloride, pH 7.2

Concentration 70 mg/ml

Note For research use only.

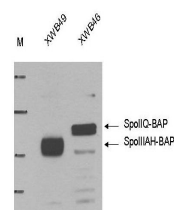
Isotype Antiserum

Clonality Polyclonal

Source Anti-BIOTIN Ligase Epitope Tag antibody was prepared from whole rabbit serum produced by repeated immunizations with a synthetic peptide GLNDIFEAQKIEWH (minimal BirA substrate; biotin is added to the sequence at the lysine.)

Entrez **1017**

Dilution Range ELISA: 1:5,000, Western Blot: 1:5,000



Anti-Biotin Ligase Epitope
Tag
Antibody - Western Blot