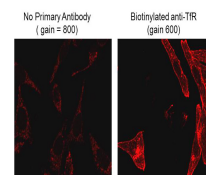


Product Datasheet

BIOTIN (MOUSE) Monoclonal Antibody GRP2041

Description	Anti-BIOTIN (MOUSE) Monoclonal Antibody
Species/Host	Mouse
Conjugation	Unconjugated
Tested Applications	ELISA, FC, IF, IHC-P, WB
Form/Appearance	0.02 M Potassium Phosphate, 0.15 M Sodium Chloride, pH 7.2
Concentration	1.0 mg/mL
Note	For research use only.
Isotype	IgG2a
Clonality	Monoclonal
Source	Anti-Biotin Antibody was produced by repeated immunizations with Biotin conjugated to Keyhole Limpet Hemocyanin (b-KLH).
Clone ID	4C7.D5
Entrez	531682
Dilution Range	ELISA: 1:20,000, Flow Cytometry: 1-2 µg /mL, Immunochemistry: 1:1,000 - 1:5,000, IF Microscopy: 2µg/mL, Western Blot: 1:2,000 - 1:10,000
Application Notes	Anti-Biotin antibody is suitable for immunoprecipitation, immunodiffusion, conjugation and most immunological methods requiring lot-to-lot consistency, high titer and specificity.



Immunofluorescence
Microscopy
- Mouse Anti-Biotin