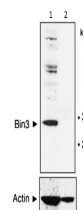


Product Datasheet

BIN3 (MOUSE) Monoclonal Antibody GRP2122

| | |
|----------------------------|--|
| Description | Anti-BIN3 (MOUSE) Monoclonal Antibody |
| Species/Host | Mouse |
| Reactivity | Mouse |
| Conjugation | Unconjugated |
| Tested Applications | ELISA, IP, WB |
| Form/Appearance | 0.02 M Potassium Phosphate, 0.15 M Sodium Chloride, pH 7.2 |
| Concentration | 1.0 mg/mL |
| Note | For research use only. |
| Isotype | IgG1 |
| Clonality | Monoclonal |
| Source | Anti-BIN3 (MOUSE) Monoclonal Antibody was produced in mouse by repeated immunizations with a full length human BIN3 recombinant protein followed by hybridoma development. |
| Clone ID | 3A4 |
| Uniprot ID | Q9NQY0 |
| Entrez | 54897 |
| Dilution Range | ELISA: 1:5000-1:50000, Immunoprecipitation: 10-100 µL, Western Blot: 1:500-1:1500 |
| Application Notes | Anti-BIN3 antibody has been tested for use in ELISA, Western Blot, and IP. Specific conditions for reactivity should be optimized by the end user. |



Western Blot - BIN3
Antibody