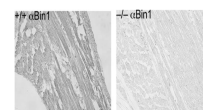


Product Datasheet

BIN1 (MOUSE) Monoclonal Antibody GRP2120

Description	Anti-BIN1 (MOUSE) Monoclonal Antibody
Species/Host	Mouse
Reactivity	Mouse
Conjugation	Unconjugated
Tested Applications	ELISA, IHC-P, IP, WB
Form/Appearance	0.02 M Potassium Phosphate, 0.15 M Sodium Chloride, pH 7.2
Concentration	1.0 mg/mL
Note	For research use only.
Isotype	IgG1
Clonality	Monoclonal
Source	Anti-BIN1 (MOUSE) Monoclonal Antibody was produced in mouse by repeated immunizations with chimeric protein that encoded the human BIN1 BAR domain followed by hybridoma development.
Clone ID	2F11
Uniprot ID	000499
Entrez	901176
Dilution Range	ELISA: 1:5000-1:50000, Immunochemistry: 1:100-1:500, Immunoprecipitation: 10-100 µL, Western Blot: 1:500-1:1500
Application Notes	Anti-BIN1 antibody has been tested for use in ELISA, Western Blot, IP, and IHC. Specific conditions for reactivity should be optimized by the end user.



Immunohistochemistry -
BIN1
Antibody