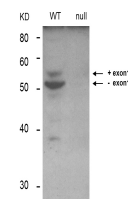


Product Datasheet

BIN1 (MOUSE) Monoclonal Antibody GRP2116

Description	Anti-BIN1 (MOUSE) Monoclonal Antibody
Species/Host	Mouse
Reactivity	Human, Mouse
Conjugation	Unconjugated
Tested Applications	ELISA, FC, IHC-P, IP, WB
Form/Appearance	0.02 M Potassium Phosphate, 0.15 M Sodium Chloride, pH 7.2
Concentration	1.0 mg/mL
Note	For research use only.
Isotype	IgG2b
Clonality	Monoclonal
Source	Anti-BIN1 (MOUSE) Monoclonal Antibody was produced in mouse by repeated immunizations with a fragment portion of recombinant human BIN1 protein followed by hybridoma development.
Clone ID	99D
Uniprot ID	000499
Entrez	54897
Dilution Range	ELISA: 1:5000-1:50000, Flow Cytometry: 0.5-1x10 ⁶ cells, Immunocytochemistry: 1:100-1:500, Immunoprecipitation: 10-100 µL, Western Blot: 1:500-1:1500
Application Notes	Anti-BIN1 antibody has been tested for use in ELISA, Western Blot, IP, IHC, and Flow Cytometry. Specific conditions for reactivity should be optimized by the end user.



Western Blot - BIN1
Antibody