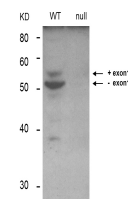


## Product Datasheet

### BIN1 (MOUSE) Monoclonal Antibody GRP2115

<b>Description</b>	Anti-BIN1 (MOUSE) Monoclonal Antibody
<b>Species/Host</b>	Mouse
<b>Reactivity</b>	Human, Mouse
<b>Conjugation</b>	Unconjugated
<b>Tested Applications</b>	ELISA, FC, IHC-P, IP, WB
<b>Form/Appearance</b>	0.02 M Potassium Phosphate, 0.15 M Sodium Chloride, pH 7.2
<b>Concentration</b>	1.0 mg/mL
<b>Note</b>	For research use only.
<b>Isotype</b>	IgG2b
<b>Clonality</b>	Monoclonal
<b>Source</b>	Anti-BIN1 (MOUSE) Monoclonal Antibody was produced in mouse by repeated immunizations with a fragment portion of recombinant human BIN1 protein followed by hybridoma development.
<b>Clone ID</b>	99D
<b>Uniprot ID</b>	<b>000499</b>
<b>Entrez</b>	<b>54897</b>
<b>Dilution Range</b>	ELISA: 1:5000-1:50000, Flow Cytometry: 0.5-1x10 <sup>6</sup> cells, Immunocytochemistry: 1:100-1:500, Immunoprecipitation: 10-100 µL, Western Blot: 1:500-1:1500
<b>Application Notes</b>	Anti-BIN1 antibody has been tested for use in ELISA, Western Blot, IP, IHC, and Flow Cytometry. Specific conditions for reactivity should be optimized by the end user.



Western Blot - BIN1  
Antibody