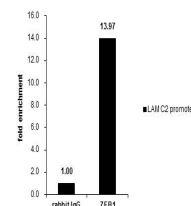


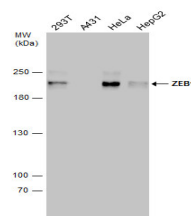
## Product Datasheet

### ZEB1 antibody [N2C1], Internal GRP38

<b>Description</b>	ZEB1 encodes a zinc finger transcription factor that represses T-lymphocyte-specific IL2 gene (MIM 147680) expression by binding to a negative regulatory domain 100 nucleotides 5-prime of the IL2 transcription start site (Williams et al., 1991 [PubMed 1840704]).[supplied by OMIM]
<b>Species/Host</b>	Rabbit
<b>Reactivity</b>	Human, Mouse
<b>Conjugation</b>	Unconjugated
<b>Tested Applications</b>	ChIP, ICC, IF, IP, WB
<b>Immunogen</b>	Recombinant protein encompassing a sequence within the center region of human ZEB1. The exact sequence is proprietary.
<b>Form/Appearance</b>	Liquid: 1XPBS, 20% Glycerol (pH7). 0.025% ProClin 300 was added as a preservative.
<b>Concentration</b>	0.1 mg/ml
<b>Storage</b>	Store as concentrated solution. Centrifuge briefly prior to opening. For short-term storage (1-2 weeks), store at 4°C. For long-term storage, aliquot and store at -20°C or below. Avoid multiple freeze-thaw cycles.
<b>Note</b>	For research use only.
<b>Isotype</b>	IgG
<b>Clonality</b>	Polyclonal
<b>Purity</b>	Purified by antigen-affinity chromatography.
<b>Uniprot ID</b>	<b>P37275</b>
<b>Entrez</b>	<b>6935</b>
<b>Dilution Range</b>	WB: 1:500-1:3000, ICC: 1:100-1:1000, IP: 1:100-1:500



Cross-linked ChIP was performed with HeLa chromatin extract and 5 µg of either control rabbit IgG or anti-ZEB1 antibody. The precipitated DNA was detected by PCR with primer set targeting to LAMC2 promoter.



Various whole cell extracts (30 µg) were separated by 5% SDS-PAGE, and the membrane was blotted with ZEB1 antibody [N2C1], Internal (GRP490) diluted at 1:1000. The HRP-conjugated anti-rabbit IgG antibody was used to detect the primary antibody.