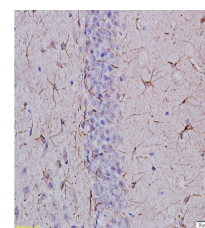
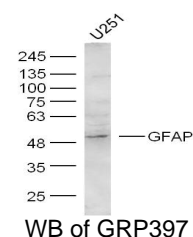


Product Datasheet

CXCL16 Polyclonal Antibody GRP397

| | |
|----------------------------|---|
| Description | Induces a strong chemotactic response. Induces calcium mobilization. Binds to CXCR6/Bonzo. Also acts as a scavenger receptor on macrophages, which specifically binds to OxLDL (oxidized low density lipoprotein), suggesting that it may be involved in pathophysiology such as atherogenesis. |
| Species/Host | Rabbit |
| Reactivity | Mouse, Rat |
| Conjugation | Unconjugated |
| Tested Applications | IHC-P, WB |
| Immunogen | KLH conjugated synthetic peptide derived from mouse CXCL16 (public_immunogen_range: 180-220/246) |
| Form/Appearance | Aqueous buffered solution containing 1% BSA, 50% glycerol and 0.09% sodium azide. |
| Concentration | 1ug/ul |
| Storage | Store at -20°C for 12 months. |
| Note | For research use only. |
| Isotype | IgG |
| Clonality | Polyclonal |
| Purity | Purified by Protein A. |
| Uniprot ID | Q8BSU2 |
| Entrez | 66102 |
| Dilution Range | WB: 1:300-1000, IHC-P: 1:200-400 |



IHC-P of GRP397