

Product Datasheet

BETA GALACTOSIDASE (E.coli) (RABBIT) Antibody Fluorescein Conjugated GRP2411

Description Anti-BETA GALACTOSIDASE (E.coli) (RABBIT) Antibody Fluorescein Conjugated

Species/Host Rabbit

Conjugation FITC

Tested Applications IF, WB

Form/Appearance 0.02 M Potassium Phosphate, 0.15 M Sodium Chloride, pH 7.2

Concentration 1.0 mg/mL

Note For research use only.

Isotype IgG

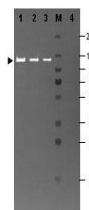
Clonality Polyclonal

Source Beta Galactosidase (E. coli)

Entrez **760**

Dilution Range Fluorochrome: 2.3, IF Microscopy: User Optimized, Western Blot: User Optimized

Application Notes Anti-Beta Galactosidase Fluorescein Conjugated Antibody is designed for fluorescent western blotting and immunofluorescence. This product is also suitable for multiplex analysis, including multicolor imaging, utilizing various commercial platforms.



Anti-Beta Galactosidase
(E.coli) Antibody
Fluorescein
Conjugated - Western Blot