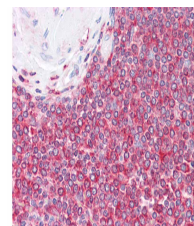


Product Datasheet

Beta Actin (MOUSE) Monoclonal Antibody GRP2127

Description	Anti-Beta Actin (MOUSE) Monoclonal Antibody
Species/Host	Mouse
Reactivity	Human, Mouse, Rat
Conjugation	Unconjugated
Tested Applications	ELISA, IHC-P, WB
Form/Appearance	0.02 M Potassium Phosphate, 0.15 M Sodium Chloride, pH 7.2
Concentration	1.0 mg/mL
Note	For research use only.
Isotype	IgG2a
Clonality	Monoclonal
Source	Anti-beta Actin (MOUSE) Monoclonal Antibody was produced in mouse by repeated immunizations with β -Actin peptide near the N-Terminus followed by hybridoma development.
Clone ID	3H2.E4.E12
Uniprot ID	P60709
Entrez	281572
Dilution Range	ELISA: 1:5000-1:50000, Immunochemistry: User Optimized, Western Blot: 1 μ g /mL
Application Notes	Anti-beta Actin antibody has been tested for use in ELISA, immunohistochemistry, and Western Blot. Specific conditions for reactivity should be optimized by the end user.



beta Actin Antibody - IHC