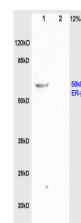


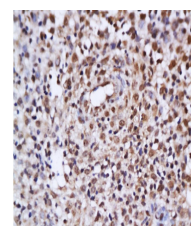
Product Datasheet

GADD45 Polyclonal Antibody GRP388

| | |
|----------------------------|---|
| Description | In T-cells, functions as a regulator of p38 MAPKs by inhibiting p38 phosphorylation and activity (By similarity). Might affect PCNA interaction with some CDK (cell division protein kinase) complexes; stimulates DNA excision repair in vitro and inhibits entry of cells into S phase. |
| Species/Host | Rabbit |
| Reactivity | Human, Mouse, Rat |
| Conjugation | Unconjugated |
| Tested Applications | FC, IHC-P, WB |
| Immunogen | KLH conjugated synthetic peptide derived from human GADD45 (public_immunogen_range: 100-150/165) |
| Form/Appearance | Aqueous buffered solution containing 1% BSA, 50% glycerol and 0.09% sodium azide. |
| Concentration | 1ug/ul |
| Storage | Store at -20°C for 12 months. |
| Note | For research use only. |
| Isotype | IgG |
| Clonality | Polyclonal |
| Purity | Purified by Protein A. |
| Uniprot ID | P24522 |
| Entrez | 1647 |
| Dilution Range | WB: 1:300-1000, FC: 1:20-100, IHC-P: 1:200-400 |



WB of GRP388



IHC-P of GRP388