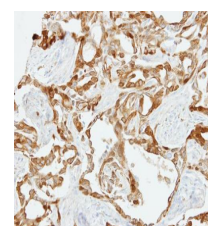


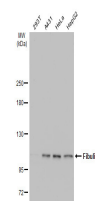
Product Datasheet

Fibulin 2 antibody GRP37

Description	This gene encodes an extracellular matrix protein, which belongs to the fibulin family. This protein binds various extracellular ligands and calcium. It may play a role during organ development, in particular, during the differentiation of heart, skeletal and neuronal structures. Alternatively spliced transcript variants encoding different isoforms have been identified. [provided by RefSeq]
Species/Host	Rabbit
Reactivity	Human, Mouse, Rat
Conjugation	Unconjugated
Tested Applications	IHC-P, WB
Immunogen	Recombinant protein encompassing a sequence within the N-terminus region of human Fibulin 2. The exact sequence is proprietary.
Form/Appearance	Liquid: 1XPBS, 20% Glycerol (pH7). 0.025% ProClin 300 was added as a preservative.
Concentration	1.3 mg/ml
Storage	Store as concentrated solution. Centrifuge briefly prior to opening vial. For short-term storage (1-2 weeks), store at 4°C. For long-term storage, aliquot and store at -20°C or below. Avoid multiple freeze-thaw cycles.
Note	For research use only.
Isotype	IgG
Clonality	Polyclonal
Purity	Purified by antigen-affinity chromatography.
Uniprot ID	P98095
Entrez	2199
Dilution Range	WB: 1:500-1:3000, IHC-P: 1:100-1:1000



Immunohistochemical analysis of paraffin-embedded H661 xenograft, using Fibulin 2 (GRP489) antibody at 1:500 dilution.



Various whole cell extracts (30 µg) were separated by 5% SDS-PAGE, and the membrane was blotted with Fibulin 2 antibody (GRP489) diluted at 1:1000. The HRP-conjugated anti-rabbit IgG antibody was used to detect the primary antibody.