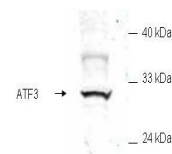


## Product Datasheet

### ATF3 (RABBIT) Antibody GRP3449

<b>Description</b>	Anti-ATF3 (RABBIT) Antibody
<b>Species/Host</b>	Rabbit
<b>Reactivity</b>	Human
<b>Conjugation</b>	Unconjugated
<b>Tested Applications</b>	ELISA, WB
<b>Form/Appearance</b>	0.02 M Potassium Phosphate, 0.15 M Sodium Chloride, pH 7.2
<b>Concentration</b>	1.0 mg/mL
<b>Note</b>	For research use only.
<b>Isotype</b>	IgG
<b>Clonality</b>	Polyclonal
<b>Source</b>	This antibody was prepared from whole rabbit serum produced by repeated immunizations with a synthetic peptide corresponding to an internal region of human ATF3.
<b>Uniprot ID</b>	<b>P18847</b>
<b>Entrez</b>	<b>274</b>
<b>Dilution Range</b>	ELISA: 1:5,000 - 1:20,000, Western Blot: 1:200 - 1:2000
<b>Application Notes</b>	Affinity purified anti-ATF3 has been tested by ELISA and western blotting against recombinant forms of the protein. Although not tested, this antibody is likely function in most immunoassays including immunofluorescence microscopy, immunohistochemistry.



Anti-ATF3 Antibody -  
Western  
Blot