

## Product Datasheet

### GDF8/MSTN Polyclonal Antibody GRP378

#### Description

The protein encoded by this gene is a member of the bone morphogenetic protein (BMP) family and the TGF-beta superfamily. This group of proteins is characterized by a polybasic proteolytic processing site which is cleaved to produce a mature protein containing seven conserved cysteine residues. The members of this family are regulators of cell growth and differentiation in both embryonic and adult tissues. This gene is thought to encode a secreted protein which negatively regulates skeletal muscle growth. Acts specifically as a negative regulator of skeletal muscle growth. [SUBUNIT] Homodimer; [TISSUE SPECIFICITY] Expressed specifically in developing and adult skeletal muscle. Weak expression in adipose tissue. Belongs to the TGF-beta family.

#### Species/Host

Rabbit

#### Reactivity

Human, Mouse, Rat

#### Conjugation

Unconjugated

#### Tested Applications

IHC-P, WB

#### Immunogen

KLH conjugated synthetic peptide derived from human GDF8 (public\_immunogen\_range: 300-350/375)

#### Form/Appearance

Aqueous buffered solution containing 1% BSA, 50% glycerol and 0.09% sodium azide.

#### Concentration

1ug/ul

#### Storage

Store at -20°C for 12 months.

#### Note

For research use only.

#### Isotype

IgG

#### Clonality

Polyclonal

#### Purity

Purified by Protein A.

#### Uniprot ID

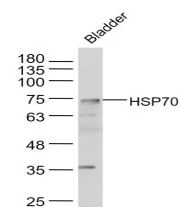
**014793**

#### Entrez

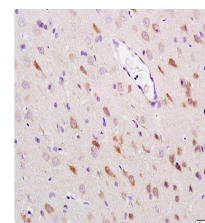
**2660**

#### Dilution Range

WB: 1:300-1000, IHC-P: 1:200-400



WB of GRP378



IHC-P of GRP378