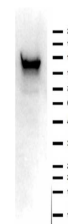


Product Datasheet

ASAP1 (RABBIT) Antibody GRP3790

Description	Anti-ASAP1 (RABBIT) Antibody
Species/Host	Rabbit
Reactivity	Human
Conjugation	Unconjugated
Tested Applications	ELISA, WB
Form/Appearance	0.02 M Potassium Phosphate, 0.15 M Sodium Chloride, pH 7.2
Concentration	1.04 mg/ml
Note	For research use only.
Isotype	IgG
Clonality	Polyclonal
Source	Anti-ASAP1 affinity purified antibody was prepared from whole rabbit serum produced by repeated immunizations with a synthetic peptide corresponding to the c-terminus region of human ASAP1 protein.
Uniprot ID	Q9ULH1
Entrez	11461
Dilution Range	ELISA: 1:50,000, Western Blot: 1µg /mL



Western blot of
Anti-ASAP1
antibody