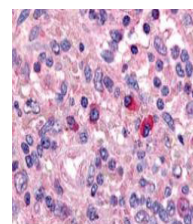


## Product Datasheet

# ARTEMIS (DCLRE1C DNA cross-link repair 1C) [GOAT] Antibody GRP3282

<b>Description</b>	Anti-ARTEMIS (DCLRE1C DNA cross-link repair 1C) [GOAT] Antibody
<b>Species/Host</b>	Goat
<b>Reactivity</b>	Human
<b>Conjugation</b>	Unconjugated
<b>Tested Applications</b>	ELISA, IHC-P, WB
<b>Form/Appearance</b>	0.02 M Potassium Phosphate, 0.15 M Sodium Chloride, pH 7.2
<b>Concentration</b>	1.2 mg/mL
<b>Note</b>	For research use only.
<b>Isotype</b>	IgG
<b>Clonality</b>	Polyclonal
<b>Source</b>	This affinity purified antibody was prepared from whole goat serum produced by repeated immunizations with a synthetic peptide corresponding an internal region of Human ARTEMIS (DCLRE1C DNA cross-link repair 1C).
<b>Uniprot ID</b>	<b>Q96SD1</b>
<b>Entrez</b>	<b>12014</b>
<b>Dilution Range</b>	ELISA: 1:10,000 - 1:20,000, Immunochemistry: 1:1,000, Western Blot: 1:500 - 1:2,000



Anti-Artemis Antibody - Immunohistochemistry

**Application Notes** This affinity purified antibody has been tested for use in ELISA, immunohistochemistry and western blotting. Reactivity in other immunoassays is unknown. This antibody detects a band of approximately 90 kDa (predicted molecular weight: 78 kDa).