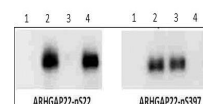


## Product Datasheet

### ARHGAP22 pS397 (RABBIT) Antibody GRP3859

<b>Description</b>	Anti-ARHGAP22 pS397 (RABBIT) Antibody
<b>Species/Host</b>	Rabbit
<b>Reactivity</b>	Human, Mouse, Rat
<b>Conjugation</b>	Unconjugated
<b>Tested Applications</b>	ELISA, IF, IHC-P, WB
<b>Form/Appearance</b>	0.02 M Potassium Phosphate, 0.15 M Sodium Chloride, pH 7.2
<b>Concentration</b>	1.07 mg/ml
<b>Note</b>	For research use only.
<b>Isotype</b>	IgG
<b>Clonality</b>	Polyclonal
<b>Source</b>	ARHGAP22 affinity purified antibody was prepared from whole rabbit serum produced by repeated immunizations with a synthetic phospho-peptide corresponding to the region surrounding mouse pS397 region of ARHGAP22.
<b>Uniprot ID</b>	<b>Q8BL80</b>
<b>Entrez</b>	<b>9776</b>
<b>Dilution Range</b>	ELISA: 1:20,000 - 1:60,000, Immunochemistry: 1:100-1:500, IF Microscopy: 1:100-1:500, Western Blot: 1 µg /ml



Anti-ARHGAP22 pS397  
Western  
Blot

**Application Notes** Anti-ARHGAP22 pS397 antibody is useful for ELISA, Western Blot and Immunostaining. Specific conditions for reactivity should be optimized by the end user. Expect a band approximately ~77.8 kDa corresponding to the appropriate cell lysate or extract.