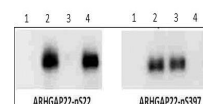


Product Datasheet

ARHGAP22 pS22 (RABBIT) Antibody GRP3858

Description	Anti-ARHGAP22 pS22 (RABBIT) Antibody
Species/Host	Rabbit
Reactivity	Human, Mouse, Rat
Conjugation	Unconjugated
Tested Applications	ELISA, IF, IHC-P, WB
Form/Appearance	0.02 M Potassium Phosphate, 0.15 M Sodium Chloride, pH 7.2
Concentration	1.07 mg/ml
Note	For research use only.
Isotype	IgG
Clonality	Polyclonal
Source	ARHGAP22 affinity purified antibody was prepared from whole rabbit serum produced by repeated immunizations with a synthetic phospho-peptide corresponding to the region surrounding mouse pS22 region of ARHGAP22.
Uniprot ID	Q8BL80
Entrez	9776
Dilution Range	ELISA: 1:20,000 - 1:60,000, Immunochemistry: 1:100-1:500, IF Microscopy: 1:100-1:500, Western Blot: 1 µg /ml



Anti-ARHGAP22 pS22
Western
Blot

Application Notes Anti-ARHGAP22 pS22 antibody is useful for ELISA, Western Blot and Immunostaining. Specific conditions for reactivity should be optimized by the end user. Expect a band approximately ~77.8 kDa corresponding to the appropriate cell lysate or extract.