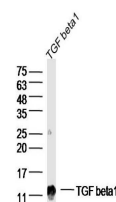


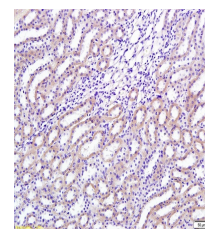
Product Datasheet

SHP-2/PTPN11 Polyclonal Antibody GRP371

Description	Acts downstream of various receptor and cytoplasmic protein tyrosine kinases to participate in the signal transduction from the cell surface to the nucleus. Dephosphorylates ROCK2 at Tyr-722 resulting in stimulation of its RhoA binding activity.
Species/Host	Rabbit
Reactivity	Human, Mouse, Rat
Conjugation	Unconjugated
Tested Applications	IHC-P, WB
Immunogen	KLH conjugated synthetic peptide derived from human PTPN11 (public_immunogen_range: 515-560/597)
Form/Appearance	Aqueous buffered solution containing 1% BSA, 50% glycerol and 0.09% sodium azide.
Concentration	1ug/ul
Storage	Store at -20°C for 12 months.
Note	For research use only.
Isotype	IgG
Clonality	Polyclonal
Purity	Purified by Protein A.
Uniprot ID	Q06124
Entrez	5781
Dilution Range	WB: 1:300-1000, IHC-P: 1:200-400



WB of GRP371



IHC-P of GRP371