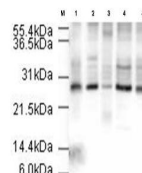


## Product Datasheet

### APC10 (RABBIT) Antibody GRP3382

<b>Description</b>	Anti-APC10 (RABBIT) Antibody
<b>Species/Host</b>	Rabbit
<b>Reactivity</b>	Human
<b>Conjugation</b>	Unconjugated
<b>Tested Applications</b>	ELISA, IHC-P, IP, WB
<b>Form/Appearance</b>	0.02 M Potassium Phosphate, 0.15 M Sodium Chloride, pH 7.2
<b>Concentration</b>	1.50 mg/mL
<b>Note</b>	For research use only.
<b>Isotype</b>	IgG
<b>Clonality</b>	Polyclonal
<b>Purity</b>	This is an affinity purified antibody produced by immunoaffinity chromatography using the immunizing peptide after immobilization to a solid phase.
<b>Source</b>	This affinity purified antibody was prepared from whole rabbit serum produced by repeated immunizations with a synthetic peptide corresponding to amino acids near the amino terminus of human APC10.
<b>Uniprot ID</b>	<b>Q9UM13</b>
<b>Entrez</b>	<b>513608</b>
<b>Dilution Range</b>	ELISA: 1:15,000 - 1:80,000, Immunochemistry: 1:250 - 1:1,000, Immunoprecipitation: 1:100, Western Blot: 1:500 - 1:1,500
<b>Application Notes</b>	This affinity purified antibody has been tested for use in ELISA against the immunizing peptide and by western blotting against various cell lysates. Reactivity in other immunoassays is unknown.



Anti-APC10 Antibody -  
Western  
Blot