

Product Datasheet

ALPHA-1-ACID GLYCOPROTEIN (Human Plasma) (RABBIT) Antibody GRP2259

Description Anti-ALPHA-1-ACID GLYCOPROTEIN (Human Plasma) (RABBIT) Antibody

Species/Host Rabbit

Reactivity Human

Conjugation Unconjugated

Tested Applications ELISA, IHC-P, WB

Form/Appearance 0.02 M Potassium Phosphate, 0.15 M Sodium Chloride, pH 7.2

Concentration 1.0 mg/ml

Note For research use only.

Isotype IgG

Clonality Polyclonal

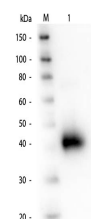
Source Anti-Alpha-1-Acid Glycoprotein Antibody was produced by repeated immunizations with human plasma a-1-Acid Glycoprotein.

Uniprot ID **P02763**

Entrez **2**

Dilution Range ELISA: 1:135,000, Immunochemistry: User Optimized, Western Blot: 1:2,000 - 1:10,000

Application Notes Anti-Alpha-1-Acid Glycoprotein Antibody is suitable for western blotting and for ELISA. Researchers should determine optimal titers for applications that are not stated below.



Alpha-1-Acid Glycoprotein (Human Plasma) Antibody - Western Blot