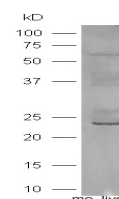


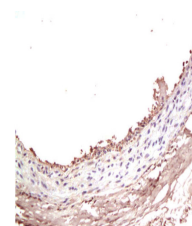
## Product Datasheet

### SGLT1 Polyclonal Antibody GRP356

<b>Description</b>	Actively transports glucose into cells by Na(+) cotransport with a Na(+) to glucose coupling ratio of 2:1. Efficient substrate transport in mammalian kidney is provided by the concerted action of a low affinity high capacity and a high affinity low capacity Na(+)/glucose cotransporter arranged in series along kidney proximal tubules.
<b>Species/Host</b>	Rabbit
<b>Reactivity</b>	Human, Mouse, Rat, Dog
<b>Conjugation</b>	Unconjugated
<b>Tested Applications</b>	IHC-P, WB
<b>Immunogen</b>	KLH conjugated synthetic peptide derived from mouse SGLT1 (public_immunogen_range: 402-423/665)
<b>Form/Appearance</b>	Aqueous buffered solution containing 1% BSA, 50% glycerol and 0.09% sodium azide.
<b>Concentration</b>	1ug/ul
<b>Storage</b>	Store at -20°C for 12 months.
<b>Note</b>	For research use only.
<b>Isotype</b>	IgG
<b>Clonality</b>	Polyclonal
<b>Purity</b>	Purified by Protein A.
<b>Uniprot ID</b>	<b>Q8C3K6</b>
<b>Entrez</b>	<b>20537</b>
<b>Dilution Range</b>	WB: 1:300-1000, IHC-P: 1:200-400



WB of GRP356



IHC-P of GRP356