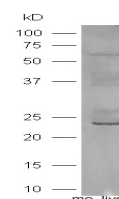


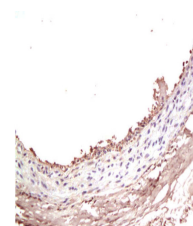
## Product Datasheet

### SGLT1 Polyclonal Antibody GRP356

|                            |   |
|----------------------------|---|
| <b>Description</b>         | Actively transports glucose into cells by Na(+) cotransport with a Na(+) to glucose coupling ratio of 2:1. Efficient substrate transport in mammalian kidney is provided by the concerted action of a low affinity high capacity and a high affinity low capacity Na(+)/glucose cotransporter arranged in series along kidney proximal tubules. |
| <b>Species/Host</b>        | Rabbit  |
| <b>Reactivity</b>          | Human, Mouse, Rat, Dog  |
| <b>Conjugation</b>         | Unconjugated  |
| <b>Tested Applications</b> | IHC-P, WB   |
| <b>Immunogen</b>           | KLH conjugated synthetic peptide derived from mouse SGLT1 (public_immunogen_range: 402-423/665)   |
| <b>Form/Appearance</b>     | Aqueous buffered solution containing 1% BSA, 50% glycerol and 0.09% sodium azide.   |
| <b>Concentration</b>       | 1ug/ul  |
| <b>Storage</b>             | Store at -20°C for 12 months.   |
| <b>Note</b>                | For research use only.  |
| <b>Isotype</b>             | IgG   |
| <b>Clonality</b>           | Polyclonal  |
| <b>Purity</b>              | Purified by Protein A.  |
| <b>Uniprot ID</b>          | <b>Q8C3K6</b>   |
| <b>Entrez</b>              | <b>20537</b>  |
| <b>Dilution Range</b>      | WB: 1:300-1000, IHC-P: 1:200-400  |



WB of GRP356



IHC-P of GRP356