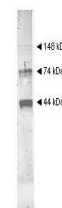


## Product Datasheet

### ALCOHOL DEHYDROGENASE (Yeast) (RABBIT) Antibody GRP1629

<b>Species/Host</b>	Rabbit
<b>Reactivity</b>	Fungi
<b>Conjugation</b>	Unconjugated
<b>Tested Applications</b>	ELISA, IP, WB
<b>Form/Appearance</b>	0.02 M Potassium Phosphate, 0.15 M Sodium Chloride, pH 7.2
<b>Concentration</b>	90 mg/mL
<b>Note</b>	For research use only.
<b>Isotype</b>	Antiserum
<b>Clonality</b>	Polyclonal
<b>Source</b>	This antibody was prepared from whole rabbit serum produced by repeated immunizations with full length Alcohol Dehydrogenase isolated from yeast.
<b>Uniprot ID</b>	<b>P00330</b>
<b>Entrez</b>	<b>100009055</b>
<b>Dilution Range</b>	ELISA: 1:5,000 - 1:25,000, Immunoprecipitation: 1:100, Western Blot: 1:500 - 1:2,000
<b>Application Notes</b>	This antibody has been tested for use in ELISA and by western blot.



Anti-Alcohol  
Dehydrogenase  
Antibody - Western Blot