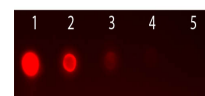


Product Datasheet

AKT2 (RAT) Phycoerythrin Conjugated Monoclonal Antibody GRP2720

Description	Anti-AKT2 (RAT) Phycoerythrin Conjugated Monoclonal Antibody
Species/Host	Rat
Reactivity	Human
Conjugation	RPE
Tested Applications	ELISA, FC, IF, IHC-P, WB
Form/Appearance	0.02 M Potassium Phosphate, 0.5 M Sodium Chloride, pH 7.2
Concentration	1.0 mg/mL
Note	For research use only.
Isotype	IgG2a
Clonality	Monoclonal
Source	Anti-AKT2 Antibody was produced in rat by repeated immunizations with a synthetic peptide corresponding to internal residues of human AKT2 protein.
Clone ID	11F6.B2
Uniprot ID	P31751
Entrez	10000
Dilution Range	ELISA: User Optimized, Flow Cytometry: User Optimized, Fluorochrome: 1-2, Immunocytochemistry: User optimized, IF Microscopy: User optimized, Western Blot: User Optimized



AKT2 Phycoerythrin
Conjugated
Monoclonal Antibody - Dot
Blot