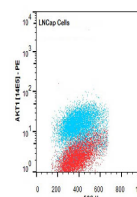


Product Datasheet

AKT1 (MOUSE) Phycoerythrin Conjugated Monoclonal Antibody GRP2242

Description	Anti-AKT1 (MOUSE) Phycoerythrin Conjugated Monoclonal Antibody
Species/Host	Mouse
Reactivity	Human, Mouse, Rat
Conjugation	RPE
Tested Applications	ELISA, FC, IF, IHC-P, WB
Form/Appearance	0.02 M Potassium Phosphate, 0.5 M Sodium Chloride, pH 7.2
Concentration	1.0 mg/mL
Note	For research use only.
Isotype	IgG2a
Clonality	Monoclonal
Source	Anti-AKT1 Antibody was produced in mice by repeated immunizations with a synthetic peptide corresponding to internal residues of human AKT1 protein followed by monoclonal development.
Clone ID	14E5.A2.B2.H9
Uniprot ID	P31749
Entrez	208
Dilution Range	ELISA: User Optimized, Flow Cytometry: 1.0 µg /mL, Fluorochrome: 1-2, Immunochemistry: User optimized, IF Microscopy: User optimized, Western Blot: User Optimized



Flow Cytometry of Mouse anti-AKT1 Phycoerythrin