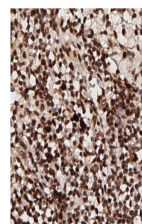


Product Datasheet

AKT pT308 (RABBIT) Antibody GRP3371

Description	Anti-AKT pT308 (RABBIT) Antibody
Species/Host	Rabbit
Reactivity	Human, Mouse, Rat
Conjugation	Unconjugated
Tested Applications	ELISA, FC, IHC-P, WB
Form/Appearance	0.02 M Potassium Phosphate, 0.15 M Sodium Chloride, pH 7.2
Concentration	1.0 mg/mL
Note	For research use only.
Isotype	IgG
Clonality	Polyclonal
Source	Anti-AKT pT308 polyclonal antibody was produced by repeated immunizations with a phosphorylated synthetic peptide corresponding to residues surrounding threonine 308 of human AKT1 protein.
Uniprot ID	P31749
Entrez	207
Dilution Range	ELISA: 1:15,000, Flow Cytometry: User Optimized, Immunohistochemistry: 1:200, Western Blot: 1:1000
Application Notes	AKT antibody is phospho specific for pT308 and is suitable for western blotting, Immunohistochemistry, dot blot, flow cytometry, and ELISA.



Immunohistochemistry of
Rabbit
Anti-AKT pT308 Antibody