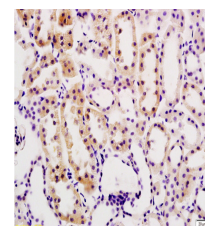


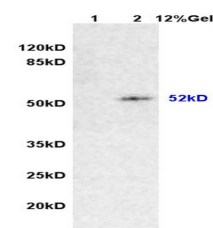
Product Datasheet

Desmin Polyclonal Antibody GRP336

| | |
|----------------------------|---|
| Description | Desmin are class-III intermediate filaments found in muscle cells. In adult striated muscle they form a fibrous network connecting myofibrils to each other and to the plasma membrane from the periphery of the Z-line structures. |
| Species/Host | Rabbit |
| Reactivity | Human, Mouse, Rat, Chicken |
| Conjugation | Unconjugated |
| Tested Applications | IHC-P, WB |
| Immunogen | KLH conjugated synthetic peptide derived from human Desmin (public_immunogen_range: 275-325/470) |
| Form/Appearance | Aqueous buffered solution containing 1% BSA, 50% glycerol and 0.09% sodium azide. |
| Concentration | 1ug/ul |
| Storage | Store at -20°C for 12 months. |
| Note | For research use only. |
| Isotype | IgG |
| Clonality | Polyclonal |
| Purity | Purified by Protein A. |
| Uniprot ID | P17661 |
| Entrez | 1674 |
| Dilution Range | WB: 1:300-1000, IHC-P: 1:200-400 |



WB of GRP336



IHC-P of GRP336