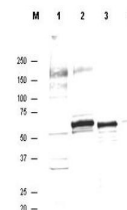


## Product Datasheet

### AKT (SHEEP) Antibody GRP4097

<b>Description</b>	Anti-AKT (SHEEP) Antibody
<b>Species/Host</b>	Sheep
<b>Reactivity</b>	Human
<b>Conjugation</b>	Unconjugated
<b>Tested Applications</b>	ELISA, FC, IF, IHC-P, WB
<b>Form/Appearance</b>	0.02 M Potassium Phosphate, 0.15 M Sodium Chloride, pH 7.2
<b>Concentration</b>	0.9 mg/mL
<b>Note</b>	For research use only.
<b>Isotype</b>	IgG
<b>Clonality</b>	Polyclonal
<b>Purity</b>	This antibody is directed against AKT and reacts with the AKT from human tissues. Based on sequence we expect this antibody to react as well with rat, mouse and chicken AKT.
<b>Source</b>	Anti-AKT antibody was affinity purified antibody was prepared by repeated immunizations with a synthetic peptide corresponding to an internal region of human AKT1 protein. A residue of cysteine was added to facilitate coupling.
<b>Uniprot ID</b>	<b>P31749</b>
<b>Entrez</b>	<b>207</b>
<b>Dilution Range</b>	ELISA: 1:5,000 - 1:20,000, Flow Cytometry: User Optimized, Immunocytochemistry: user optimized, IF Microscopy: user optimized, Western Blot: 1:500 - 1:2,000



Western Blot - Anti-AKT Antibody