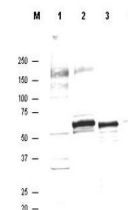


Product Datasheet

AKT (SHEEP) Antibody GRP4097

Description	Anti-AKT (SHEEP) Antibody
Species/Host	Sheep
Reactivity	Human
Conjugation	Unconjugated
Tested Applications	ELISA, FC, IF, IHC-P, WB
Form/Appearance	0.02 M Potassium Phosphate, 0.15 M Sodium Chloride, pH 7.2
Concentration	0.9 mg/mL
Note	For research use only.
Isotype	IgG
Clonality	Polyclonal
Purity	This antibody is directed against AKT and reacts with the AKT from human tissues. Based on sequence we expect this antibody to react as well with rat, mouse and chicken AKT.
Source	Anti-AKT antibody was affinity purified antibody was prepared by repeated immunizations with a synthetic peptide corresponding to an internal region of human AKT1 protein. A residue of cysteine was added to facilitate coupling.
Uniprot ID	P31749
Entrez	207
Dilution Range	ELISA: 1:5,000 - 1:20,000, Flow Cytometry: User Optimized, Immunocytochemistry: user optimized, IF Microscopy: user optimized, Western Blot: 1:500 - 1:2,000



Western Blot - Anti-AKT Antibody