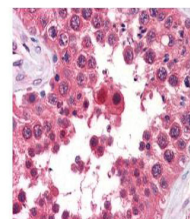


Product Datasheet

Aha1 (RAT) Monoclonal Antibody GRP2706

Description	Anti-Aha1 (RAT) Monoclonal Antibody
Species/Host	Rat
Reactivity	Human
Conjugation	Unconjugated
Tested Applications	ELISA, IHC-P, WB
Form/Appearance	0.02 M Potassium Phosphate, 0.15 M Sodium Chloride, pH 7.2
Concentration	1.0 mg/mL
Note	For research use only.
Isotype	IgG2a
Clonality	Monoclonal
Source	This Protein G purified monoclonal antibody was produced in rats by repeated immunizations with full length recombinant mouse AHA1 protein followed by hybridoma development.
Clone ID	25F2.D9
Uniprot ID	Q8BK64
Entrez	10000
Dilution Range	ELISA: 1:20,000, Immunohistochemistry: 5-10 µg /mL, Western Blot: 1:1,000



Anti-AHA1 Monoclonal
Antibody
- Immunohistochemistry