

## Product Datasheet

### BMP2 Polyclonal Antibody GRP332

#### Description

BMP2 belongs to the transforming growth factor-beta (TGFB) superfamily of secreted growth factors. It is a disulfide-linked homodimer and induces bone and cartilage formation. In addition to its osteogenic activity, BMP2 plays an important role in cardiac morphogenesis and is expressed in a variety of tissues including lung, spleen, brain, liver, prostate ovary and small intestine. The functional form of BMP2 is a 26 kDa protein composed of two identical 114 amino acid polypeptide chains linked by a single disulfide bond. BMPs control fundamental events in early embryonic development, organogenesis and adult tissue homeostasis.

#### Species/Host

Rabbit

#### Reactivity

Human, Mouse, Rat, Rabbit

#### Conjugation

Unconjugated

#### Tested Applications

IHC-P, WB

#### Immunogen

KLH conjugated synthetic peptide derived from human BMP2 (public\_immunogen\_range: 265-310/396)

#### Form/Appearance

Aqueous buffered solution containing 1% BSA, 50% glycerol and 0.09% sodium azide.

#### Concentration

1ug/ul

#### Storage

Store at -20°C for 12 months.

#### Note

For research use only.

#### Isotype

IgG

#### Clonality

Polyclonal

#### Purity

Purified by Protein A.

#### Uniprot ID

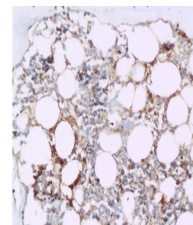
**P12643**

#### Entrez

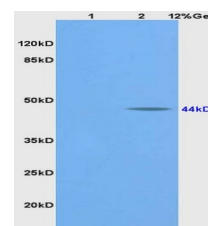
**650**

#### Dilution Range

WB: 1:300-1000, IHC-P: 1:200-400



WB of GRP332



IHC-P of GRP332