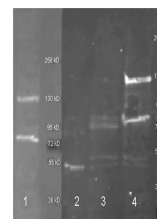


Product Datasheet

ADENOSINE DEAMINASE (Calf Spleen) GRP1500

Species/Host	Rabbit
Reactivity	Human, Mouse, Bovine
Conjugation	Unconjugated
Tested Applications	ELISA, IP, WB
Form/Appearance	0.02 M Potassium Phosphate, 0.15 M Sodium Chloride, pH 7.2
Concentration	90 mg/mL
Note	For research use only.
Isotype	Antiserum
Clonality	Polyclonal
Source	Adenosine Deaminase [Calf Spleen]
Uniprot ID	P56658
Entrez	119016
Dilution Range	ELISA: 1:5,000 - 1:10,000, Immunoprecipitation: 1:100, Western Blot: 1:500 - 1:2,000
Application Notes	Anti-Adenosine Deaminase is suitable for use in ELISA, western blot, and immunoprecipitation. Specific conditions for reactivity should be optimized by the end user.



Anti Adenosine Deaminase
Polyclonal Antibody