

Product Datasheet

COL1A2 antibody [C2C3], C-term GRP31

Description

This gene encodes the pro-alpha2 chain of type I collagen whose triple helix comprises two alpha1 chains and one alpha2 chain. Type I is a fibril-forming collagen found in most connective tissues and is abundant in bone, cornea, dermis and tendon. Mutations in this gene are associated with osteogenesis imperfecta types I-IV, Ehlers-Danlos syndrome type VIIB, recessive Ehlers-Danlos syndrome Classical type, idiopathic osteoporosis, and atypical Marfan syndrome. Symptoms associated with mutations in this gene, however, tend to be less severe than mutations in the gene for the alpha1 chain of type I collagen (COL1A1) reflecting the different role of alpha2 chains in matrix integrity. Three transcripts, resulting from the use of alternate polyadenylation signals, have been identified for this gene. [provided by R. Dalglish]

Species/Host

Rabbit

Reactivity

Human, Mouse

Conjugation

Unconjugated

Tested Applications

ICC, IF, WB

Immunogen

Recombinant protein encompassing a sequence within the C-terminus region of human COL1A2. The exact sequence is proprietary.

Form/Appearance

Liquid: 1XPBS, 1% BSA, 20% Glycerol (pH7). 0.025% ProClin 300 was added as a preservative.

Concentration

0.45 mg/ml

Storage

Store as concentrated solution. Centrifuge briefly prior to opening vial. For short-term storage (1-2 weeks), store at 4°C. For long-term storage, aliquot and store at -20°C or below. Avoid multiple freeze-thaw cycles.

Note

For research use only.

Isotype

IgG

Clonality

Polyclonal

Purity

Purified by antigen-affinity chromatography.

Uniprot ID

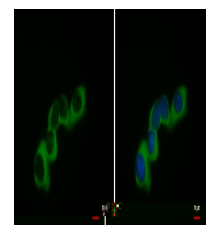
P08123

Entrez

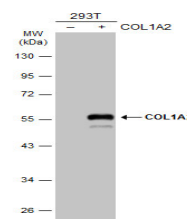
1278

Dilution Range

WB: 1:1000-1:10000, ICC: 1:100-1:1000



COL1A2 antibody [C2C3], C-term detects COL1A2 protein at cytoplasm by immunofluorescent analysis. Sample: NIH-3T3 cells were fixed in ice-cold MeOH for 5 min. Green: COL1A2 protein stained by COL1A2 antibody [C2C3], C-term (GRP483) diluted at 1:500. Blue: Ho



Non-transfected (â€“) and transfected (+) 293T whole cell extracts (30 µg) were separated by 10% SDS-PAGE, and the membrane was blotted with COL1A2 antibody [C2C3], C-term (GRP483) diluted at 1:500.