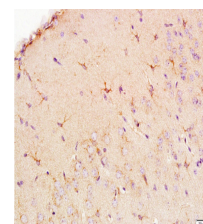


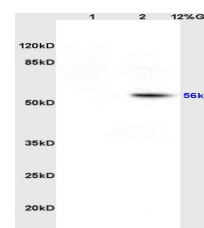
Product Datasheet

EAAT1 Polyclonal Antibody GRP327

Description	Transports L-glutamate and also L- and D-aspartate. Essential for terminating the postsynaptic action of glutamate by rapidly removing released glutamate from the synaptic cleft. Acts as a symport by cotransporting sodium.
Species/Host	Rabbit
Reactivity	Human, Mouse, Rat, Rabbit
Conjugation	Unconjugated
Tested Applications	IHC-P, WB
Immunogen	KLH conjugated synthetic peptide derived from human EAAT1 (public_immunogen_range: 335-385/512)
Form/Appearance	Aqueous buffered solution containing 1% BSA, 50% glycerol and 0.09% sodium azide.
Concentration	1ug/ul
Storage	Store at -20°C for 12 months.
Note	For research use only.
Isotype	IgG
Clonality	Polyclonal
Purity	Purified by Protein A.
Uniprot ID	P43003
Entrez	6507
Dilution Range	WB: 1:300-1000, IHC-P: 1:200-400



WB of GRP327



IHC-P of GRP327