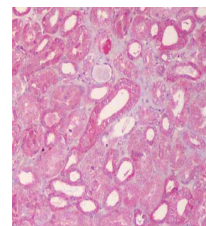


## Product Datasheet

### ABCB1 (RABBIT) Antibody GRP3566

|                            |   |
|----------------------------|---|
| <b>Description</b>         | Anti-ABCB1 (RABBIT) Antibody  |
| <b>Species/Host</b>        | Rabbit  |
| <b>Reactivity</b>          | Human   |
| <b>Conjugation</b>         | Unconjugated  |
| <b>Tested Applications</b> | ELISA, IHC-P, WB  |
| <b>Form/Appearance</b>     | 0.02 M Potassium Phosphate, 0.15 M Sodium Chloride, pH 7.2  |
| <b>Concentration</b>       | 1.0 mg/mL   |
| <b>Note</b>                | For research use only.  |
| <b>Isotype</b>             | IgG   |
| <b>Clonality</b>           | Polyclonal  |
| <b>Source</b>              | This affinity purified antibody was prepared from whole rabbit serum produced by repeated immunizations with a synthetic peptide corresponding to an internal region near amino acids 255-280 of human ABCB1 protein. |
| <b>Uniprot ID</b>          | <b>P08183</b>   |
| <b>Entrez</b>              | <b>5243</b>   |
| <b>Dilution Range</b>      | ELISA: 1:10,000 - 1:50,000, Immunochemistry: User Optimized, Western Blot: 1:200 - 1:2,000  |
| <b>Application Notes</b>   | This affinity purified antibody has been tested for use in ELISA and western blot.  |



Anti-ABCB1 Antibody -  
IHC