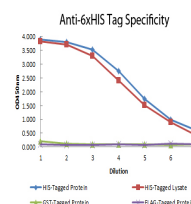


Product Datasheet

6X HIS EPI TOPE TAG (MOUSE) Monoclonal ATTO 550 Conjugated Antibody GRP2252

Description	Anti-6X HIS EPI TOPE TAG (MOUSE) Monoclonal ATTO 550 Conjugated Antibody
Species/Host	Mouse
Conjugation	ATTO-550
Tested Applications	IF, IHC-P, WB
Form/Appearance	0.02 M Potassium Phosphate, 0.15 M Sodium Chloride, pH 7.2
Concentration	1.0 mg/mL
Note	For research use only.
Isotype	IgG1
Clonality	Monoclonal
Source	HIS Tag antibody was produced in mice by repeated immunizations with 6X His epitope tag peptide H-H-H-H-H-H conjugated to KLH using maleimide.
Clone ID	33D10.D2.G8
Dilution Range	FLISA: >1:20,000, Fluorochrome: 1.0, IF Microscopy: >1:5,000, Western Blot: >1:10,000



Anti-6x-His Epitope Tag
Monoclonal Antibody -
ELISA