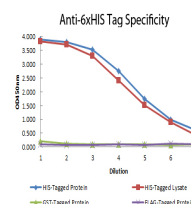


## Product Datasheet

# 6X HIS EPI TOPE TAG (MOUSE) Monoclonal Antibody Biotin Conjugated GRP2226

<b>Description</b>	Anti-6X HIS EPI TOPE TAG (MOUSE) Monoclonal Antibody Biotin Conjugated
<b>Species/Host</b>	Mouse
<b>Conjugation</b>	Biotin
<b>Tested Applications</b>	ELISA, IHC-P, WB
<b>Form/Appearance</b>	0.02 M Potassium Phosphate, 0.15 M Sodium Chloride, pH 7.2
<b>Concentration</b>	1.0 mg/mL
<b>Note</b>	For research use only.
<b>Isotype</b>	IgG1
<b>Clonality</b>	Monoclonal
<b>Source</b>	This antibody was produced in mice by repeated immunizations with 6X His epitope tag peptide H-H-H-H-H-H conjugated to KLH using maleimide.
<b>Clone ID</b>	33D10.D2.G8
<b>Dilution Range</b>	ELISA: 1:50,000 - 1:175,000, Fluorochrome: 10-20, Immunochemistry: 1:1,000 - 1:5,000, Western Blot: 1:2,000 - 1:10,000



ELISA - 6x HIS  
Monoclonal  
Antibody Biotin Conjugated