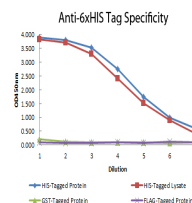


Product Datasheet

6X HIS EPI TOPE TAG (MOUSE) Monoclonal Antibody GRP2110

Description	Anti-6X HIS EPI TOPE TAG (MOUSE) Monoclonal Antibody
Species/Host	Mouse
Conjugation	Unconjugated
Tested Applications	ELISA, IHC-P, WB
Form/Appearance	0.02 M Potassium Phosphate, 0.15 M Sodium Chloride, pH 7.2
Concentration	1.0 mg/ml
Note	For research use only.
Isotype	IgG1
Clonality	Monoclonal
Source	6X HIS antibody was produced in mice by repeated immunizations with 6X His epitope tag peptide H-H-H-H-H-H conjugated to KLH using maleimide.
Clone ID	33D10.D2.G8
Dilution Range	ELISA: 1:20,000 - 1:100,000, Immunochemistry: User Optimized, Western Blot: 1:2,000 - 1:10,000



Anti-6x-His Epitope Tag
Monoclonal Antibody -
ELISA