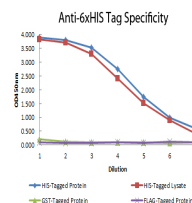


Product Datasheet

6X HIS EPITOPE TAG (MOUSE) Monoclonal Antibody GRP2058

Description	Anti-6X HIS EPITOPE TAG (MOUSE) Monoclonal Antibody
Species/Host	Mouse
Conjugation	Unconjugated
Tested Applications	ELISA, IP, WB
Form/Appearance	0.02 M Potassium Phosphate, 0.15 M Sodium Chloride, pH 7.2
Concentration	1.0 mg/mL
Note	For research use only.
Isotype	IgG1
Clonality	Monoclonal
Source	HIS Tag antibody was produced in mice by repeated immunizations with 6X His epitope tag peptide H-H-H-H-H-H conjugated to KLH using maleimide.
Clone ID	33D10.D2.G8
Dilution Range	ELISA: 1:75,000, Immunoprecipitation: 1:200, Western Blot: 1:1000



Anti-6x-His Epitope Tag
Monoclonal Antibody -
ELISA