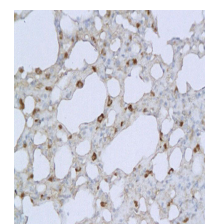


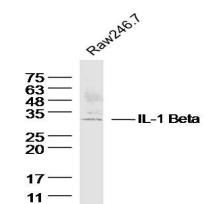
## Product Datasheet

### IL-1 Beta Polyclonal Antibody GRP312

<b>Description</b>	Produced by activated macrophages, IL-1 stimulates thymocyte proliferation by inducing IL-2 release, B-cell maturation and proliferation, and fibroblast growth factor activity. IL-1 proteins are involved in the inflammatory response, being identified as endogenous pyrogens, and are reported to stimulate the release of prostaglandin and collagenase from synovial cells.
<b>Species/Host</b>	Rabbit
<b>Reactivity</b>	Human
<b>Conjugation</b>	Unconjugated
<b>Tested Applications</b>	IHC-P, WB
<b>Immunogen</b>	KLH conjugated synthetic peptide derived from human IL-1beta (public_immunogen_range: 120-170/269)
<b>Form/Appearance</b>	Aqueous buffered solution containing 1% BSA, 50% glycerol and 0.09% sodium azide.
<b>Concentration</b>	1ug/ul
<b>Storage</b>	Store at -20°C for 12 months.
<b>Note</b>	For research use only.
<b>Isotype</b>	IgG
<b>Clonality</b>	Polyclonal
<b>Purity</b>	Purified by Protein A.
<b>Uniprot ID</b>	<b>P01584</b>
<b>Entrez</b>	<b>3553</b>
<b>Dilution Range</b>	WB: 1:300-1000, IHC-P: 1:200-400



WB of GRP312



IHC-P of GRP312