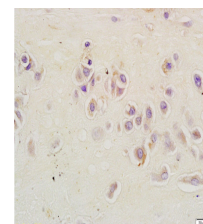


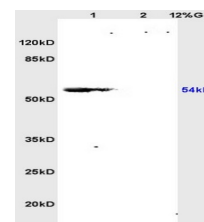
Product Datasheet

RSL1D1 Polyclonal Antibody GRP308

Description	Regulates cellular senescence through inhibition of PTEN translation. Acts as a pro-apoptotic regulator in response to DNA damage.
Species/Host	Rabbit
Reactivity	Human, Mouse, Rat
Conjugation	Unconjugated
Tested Applications	IHC-P, WB
Immunogen	KLH conjugated synthetic peptide derived from human CSIG/RSL1D1 (public_immunogen_range: 150-200/490)
Form/Appearance	Aqueous buffered solution containing 1% BSA, 50% glycerol and 0.09% sodium azide.
Concentration	1ug/ul
Storage	Store at -20°C for 12 months.
Note	For research use only.
Isotype	IgG
Clonality	Polyclonal
Purity	Purified by Protein A.
Uniprot ID	076021
Entrez	26156
Dilution Range	WB: 1:300-1000, IHC-P: 1:200-400



WB of GRP308



IHC-P of GRP308