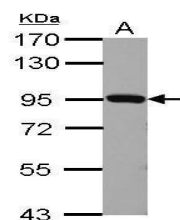


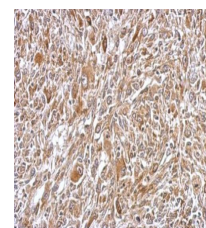
Product Datasheet

Plasminogen antibody GRP29

| | |
|----------------------------|-------------------------------------------------------------------------------------------------------------------------------------------------------------------------------------------------------------------------------------------------------------------------------------------------------------------------------------------------------------------------------------------------------------------------------------------------------------------------------------------------------------------------|
| Description | Plasminogen (PLG) is a circulating zymogen that is converted to the active enzyme plasmin by cleavage of the peptide bond between arg560 and val561, which is mediated by urokinase (PLAU; MIM 191840) and tissue plasminogen activator (PLAT; MIM 173370). The main function of plasmin is to dissolve fibrin (see, e.g., FGA, MIM 134820) clots. Plasmin, like trypsin, belongs to the family of serine proteinases (Miyata et al., 1982 [PubMed 6216475]; Forsgren et al., 1987 [PubMed 3030813]).[supplied by OMIM] |
| Species/Host | Rabbit |
| Reactivity | Human, Mouse, Rat |
| Conjugation | Unconjugated |
| Tested Applications | ICC, IF, IHC-P, WB |
| Immunogen | Recombinant protein encompassing a sequence within the center region of human Plasminogen. The exact sequence is proprietary |
| Form/Appearance | Liquid: 1XPBS, 1% BSA, 20% Glycerol (pH7). 0.025% ProClin 300 was added as a preservative. |
| Concentration | 0.18 mg/ml |
| Storage | Store as concentrated solution. Centrifuge briefly prior to opening vial. For short-term storage (1-2 weeks), store at 4°C. For long-term storage, aliquot and store at -20°C or below. Avoid multiple freeze-thaw cycles. |
| Note | For research use only. |
| Isotype | IgG |
| Clonality | Polyclonal |
| Purity | Purified by antigen-affinity chromatography. |
| Uniprot ID | P00747 |
| Entrez | 5340 |
| Dilution Range | WB: 1:500-1:3000, ICC: 1:100-1:1000, IHC-P: 1:100-1:1000 |



Sample (30 µg of whole cell lysate) A: BCL-1 7.5% SDS PAGE GRP481 diluted at 1:1000. The HRP-conjugated anti-rabbit IgG antibody was used to detect the primary antibody.



Immunohistochemical analysis of paraffin-embedded C2C12 xenograft, using Plasminogen (GRP481) antibody at 1:500 dilution.