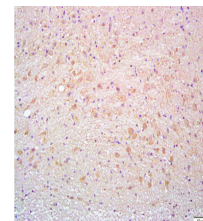


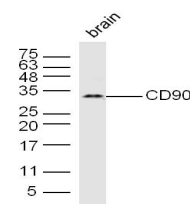
Product Datasheet

Thy-1 Polyclonal Antibody GRP306

Description	May play a role in cell-cell or cell-ligand interactions during synaptogenesis and other events in the brain.
Species/Host	Rabbit
Reactivity	Human, Mouse, Rat, Sheep
Conjugation	Unconjugated
Tested Applications	FC, IHC-P, WB
Immunogen	KLH conjugated synthetic peptide derived from rat Thy-1 (public_immunogen_range: 30-80/161)
Form/Appearance	Aqueous buffered solution containing 1% BSA, 50% glycerol and 0.09% sodium azide.
Concentration	1µg/ul
Storage	Store at -20°C for 12 months.
Note	For research use only.
Isotype	IgG
Clonality	Polyclonal
Purity	Purified by Protein A.
Uniprot ID	P01830
Entrez	24832
Dilution Range	WB: 1:300-1000, FC: 1:20-100, IHC-P: 1:200-400



WB of GRP306



IHC-P of GRP306