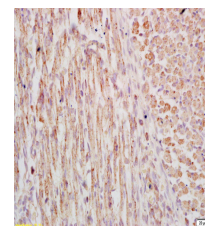


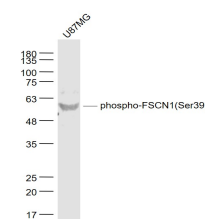
Product Datasheet

FSCN1(Ser39) Polyclonal Antibody GRP304

Description	Organizes filamentous actin into bundles with a minimum of 4.1:1 actin/fascin ratio. Plays a role in the organization of actin filament bundles and the formation of microspikes, membrane ruffles, and stress fibers. Important for the formation of a diverse set of cell protrusions, such as filopodia, and for cell motility and migration.
Species/Host	Rabbit
Reactivity	Human, Mouse, Rat, Dog
Conjugation	Unconjugated
Tested Applications	IHC-P, WB
Immunogen	KLH conjugated synthetic phosphopeptide derived from human FSCN1 around the phosphorylation site of Ser39 (public_immunogen_range: 15-65/493)
Form/Appearance	Aqueous buffered solution containing 1% BSA, 50% glycerol and 0.09% sodium azide.
Concentration	1ug/ul
Storage	Store at -20°C for 12 months.
Note	For research use only.
Isotype	IgG
Clonality	Polyclonal
Purity	Purified by Protein A.
Uniprot ID	Q16658
Entrez	6624
Dilution Range	WB: 1:300-1000, IHC-P: 1:200-400



WB of GRP304



IHC-P of GRP304